

IamaPLC: Signal level converters

PCA9306 I²C Voltage Level Translator

When the supply voltages are mismatched, the best option is to use a dedicated device to bridge them.

Allows voltage level translation between:

- 1.0V Vref (1) and 1.8V, 2.5V, 3.3V or 5V Vbias (ref) (2)
- 1.2V Vref (1) and 1.8V, 2.5V, 3.3V or 5V Vbias (ref) (2)
- 1.8V Vref (1) and 3.3V or 5V Vbias (ref) (2)
- 2.5V Vref (1) and 5V Vbias (ref) (2)
- 3.3V Vref (1) and 5V Vbias (ref) (2)

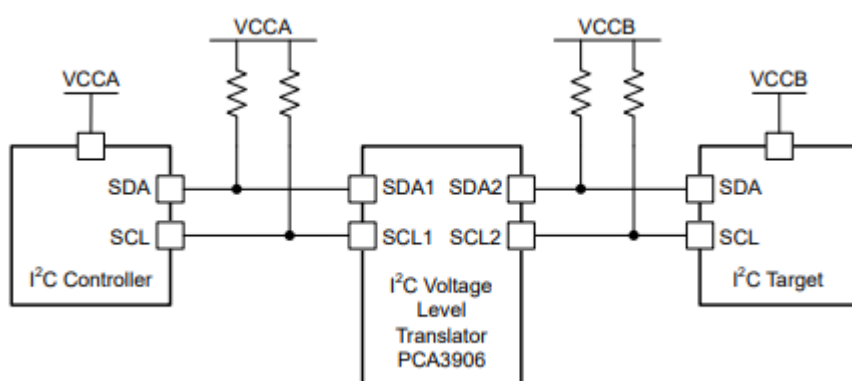


If you'd like to support the development of the site with the price of a coffee — or a few — [please do so here](#).

Here's a handy tip: you can quickly save this page as a PDF by clicking "export to PDF" in the menu on the right side of the screen.

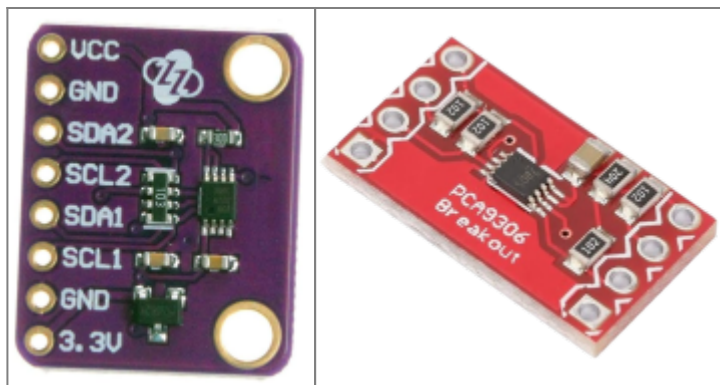
2026/02/14 23:38

The next image shows an example of using an I²C voltage-level translator to bridge communication between two different supply voltages. There are two sets of pullups, one for each voltage level. As a common voltage translator, the PCA9306 enables communication between different supply levels:



Application of PCA9306 for I²C communication: [here](#).

Several manufacturers produce compact modules using the PCA9306 IC. The picture below shows DollaTek's module (for example, you can find it on Amazon):



I2C topics on lamaPLC

Page	Date	Tags
• lamaPLC Communication: 1-Wire	2026/04/23 21:51	1-wire, communication, bus, microlan, i2c, uart, usart, ds18b20
• lamaPLC Communication: I²C	2025/09/23 21:25	i2c, i c, smbus, philips, bus, communication, arduino
• LamaPLC: AHT10 Modul	2026/03/22 03:14	communication, i2c, temperature, humidity, sensor, aht, aht 10, modul
• LamaPLC: AHT20 / BMP280 Modul	2026/04/23 21:52	bmp280, aht20, adafruit, temperature, humidity, pressure, sensor, arduino, code, i2c
• LamaPLC: APDS - Avago ALS and proximity detection sensors with I²C communication	2026/04/23 21:52	avago, apds-9900, apds-9930, apds-9960, als, proximity, detection, gesture recognition, gesture, i2c, communication, sensor, arduino, code
• lamaPLC: AS5600 Magnetic Induction Angle Measurement Sensor Module	2026/03/28 23:50	communication, i2c, as5600, as-5600, magnetic, induction, angle, sensor
• lamaPLC: Bi-Directional Logic Level Converter 3.3V ↔ 5V	2026/04/12 00:34	bi-directional, logic level converter, i2c, uart, spi
• LamaPLC: BMP/BME Bosch Temperature/Humidity/Pressure sensors with I²C communication	2026/04/23 21:52	bme280, bme680, bmp180, bmp280, hw-611, hw611, bosch, temperature, humidity, pressure, sensor, arduino, i2c, communication, cjmcu
• LamaPLC: CJMCU-219/INA-219 breakout board/IC with I²C communication	2026/04/23 21:52	cjmcu-219, ina-219, ina219, breakout board, i2c, communication, sensor, voltage, current, arduino, code, cjmcu
• LamaPLC: CJMCU-3216 / AP-3216 integrated digital ambient light and proximity sensor module/IC with I²C communication	2026/04/23 21:52	cjmcu-3216, cjmcu, ap-3216, ap3216, ambient light, proximity, sensor, arduino, code, i2c, communication
• lamaPLC: CJMCU-811 CCS811 Gas Sensor (VOCs TVOC CO₂)	2026/03/22 00:08	cjmcu-811, ccs811, gas, sensor, vocs, tvoc, eco2, co2, arduino, air quality metal oxide, mox, i2c
• LamaPLC: D6T Omron Non-Contact Thermal Sensors with I²C communication	2026/04/23 21:52	d6t, d6t-32l, d6t-44l, d6t-8l, d6t-1a, omron, non-contact, thermal, sensor, i2c, arduino, code
• LamaPLC: DPS Infineon Temperature/Pressure sensors with I²C communication	2026/04/23 21:52	dps310, infineon, temperature, pressure, sensor, arduino, i2c, communication, code

• lamaPLC: Energy, power, current, and voltage	2025/05/31 23:32	i2c, i c, communication, arduino, energy, power, current, sensor, ina226
• LamaPLC: ENS ScioSense Multi-gas sensors with I ² C communication	2026/04/23 21:52	ens160, sciosense, gas-quality, i2c, communication, sensor, arduino, code, eco2, tvoc, aqi, indoor air quality, iaq, co2, voc
• lamaPLC: ESP32 / ESP8266	2025/11/22 00:07	esp8266, esp32, esp32-c2, esp32-c3, esp32-c5, esp32-c6, esp32-c61, esp32-h2, esp32-s2, esp32-s3, esp32-p4, espressif systems, communication, ethernet, ip, wi-fi, thread, zigbee, matter, homekit, bluetooth, mqtt, adc, spi, uart, i2c, i2s, rmt, pwm, usb, usb otg, twai
• LamaPLC: Gas sensors	2023/07/01 17:29	gas, sensor, i2c, onewire, communication, mq-3, mq-4, mq-5, mq-6, mq-7, mq-8, mq-9, mq-135, gm-102b, gm-302b, gm-502b, gm-702b, alcohol, ch4, natural gas, smoke, lng, co, co2, lpg, h2, iso-butane, nox, nh3, benzene, town gas, formaldehyde, propane, humidity, temperature, voc, grv gas sens v2
• lamaPLC: GY-511 6DOF sensor module	2026/03/22 01:44	stmicroelectronics, lsm303dlhc, i2c, lsm303, sensor, gy-511, 6dof, pololu, module, arduino
• LamaPLC: GY-9250 MPU-9250/6500 9-axis Attitude Sensor Board	2026/04/23 21:52	ak8963, gy-9250, mpu-9250, 9-axis, motion detection, magnetometer, communication, i c, i2c, spi
• LamaPLC: HDC Texas Instruments Temperature/humidity sensors with I ² C communication	2026/04/23 21:52	sht21, htu21, si7021, gy-21, gy-213v, hdc1080, gy-213v-hdc1080, cjmcu, cjmcu-1080, texas instruments, temperature, humidity, sensor, i2c, communication, arduino, code
• lamaPLC: HT16K33 display controller	2026/04/23 21:51	i2c, 7-segment display, display, ht16k33, arduino
• LamaPLC: HTU TE Connectivity temperature/humidity sensors with I ² C communication	2026/04/23 21:52	htu, htu31d, htu21d, htu20d, sht20, htu20, sht21, htu21, si7021, gy-21, gy-213v, hdc1080, si702, gy-20, sht31, htu31, si7031, gy-31, te connectivity, temperature, humidity, i2c, communication, sensor, arduino, code
• lamaPLC: INA modules with Arduino libraries	2026/04/11 19:54	i2c, i c, communication, arduino, energy, power, current, monitor, sensor, ina219, gy-219, ina226, gy-216, ina228, gy-228, ina237, ina238, ina260, ina3221, ina
• lamaPLC: INA226 - current/voltage/power monitor with I ² C communication	2026/04/23 21:52	i2c, i c, communication, arduino, energy, power, current, monitor, sensor, ina226, ina219, ina
• lamaPLC: LCD 1602/2004 with I ² C communication	2026/02/14 18:27	communication, i2c, display, lcd, 1602, 2004, hd44780, pcf8574, pcf8574t, pcf8574at, arduino

- [LamaPLC: MAX30100/MAX30102 Heart Rate Click Sensor Module](#) 2026/04/23 21:52 [max30102](#), [max30100](#), [heart rate click](#), [sensor](#), [communication](#), [i2c](#), [arduino](#), [code](#)
- [lamaPLC: MCP23017 / MCP23S17 16-Bit I/O Expander with Serial Interface I²C / SPI](#) 2026/04/23 21:52 [communication](#), [i2c](#), [mcp23017](#), [mcp23s17](#), [spi](#), [i o expander](#), [serial](#), [cjmcu-2317](#), [cjmcu](#)
- [LamaPLC: Pixart PAJ7620U2 Gesture recognition sensors/module with I²C communication](#) 2026/04/23 21:52 [paj7620u2](#), [gy-paj7620](#), [pixart](#), [gesture recognition](#), [i2c](#), [communication](#), [sensor](#), [arduino](#), [code](#)
- [LamaPLC: SC16IS750 / SC16IS752: One or two serial \(UART\) ports from microcontroller via I²C or SPI communication](#) 2026/04/23 21:52 [cjmcu-750](#), [cjmcu-752](#), [cjmcu](#), [nxp](#), [sc16is750](#), [sc16is752](#), [uart](#), [serial](#), [i2c](#), [spi](#), [modul](#), [converter](#), [arduino](#), [code](#)
- [LamaPLC: SGP Sensirion TVOC/VOC sensors with I²C communication](#) 2026/04/15 19:41 [sgp30](#), [sgp40](#), [sgp41](#), [sensirion](#), [gas-sensor](#), [i2c](#), [communication](#), [sensor](#), [arduino](#), [code](#), [eco2](#), [voc](#), [tvoc](#), [indoor air quality](#), [iaq](#), [nox](#), [hydrogen](#)
- [LamaPLC: SHT Sensirion Temperature/humidity sensor with I²C communication](#) 2026/04/23 21:52 [sht20](#), [sht21](#), [sht25](#), [sht30](#), [sht31](#), [sht35](#), [sht40](#), [gy21](#), [temperature](#), [humidity](#), [i2c](#), [communication](#), [sensor](#), [arduino](#), [code](#)
- [lamaPLC: Signal level converters](#) 2026/02/14 23:47 [pca9306](#), [i2c](#), [voltage](#), [level](#), [converter](#)
- [lamaPLC: TCA9548A \(HW617\); Low-Voltage 8-Channel I²C Switch Module](#) 2026/02/14 23:51 [tca9548a](#), [hw617](#), [i2c](#), [switch](#), [communication](#), [expansion board](#), [arduino](#)
- [lamaPLC: TM1637 7-segment display](#) 2026/02/14 18:26 [i2c](#), [7-segment display](#), [display](#), [tm1637](#), [arduino](#)
- [LamaPLC: TOFnnnC STMicroelectronics Time-of-Flight \(ToF\) sensors with I²C communication](#) 2026/04/23 21:52 [tof050c](#), [vl6180](#), [tof200c](#), [vl53l0x](#), [tof400c](#), [vl53l1x](#), [stmicroelectronics](#), [time-of-flight](#), [tof](#), [i2c](#), [communication](#), [sensor](#), [arduino](#), [code](#)
- [LamaPLC: VL53Lnn STMicroelectronics time-of-flight \(ToF\) laser-ranging sensors with I²C communication](#) 2026/04/23 21:52 [vl53l0x](#), [vl53l1x](#), [vl53l0 1xv2](#), [gy-530](#), [time-of-flight](#), [tof](#), [laser-ranging](#), [i2c](#), [communication](#), [sensor](#), [arduino](#), [code](#)
- [LamaPLC: VL6180X STMicroelectronics Time-of-Flight \(ToF\) sensor with I²C communication](#) 2026/04/23 21:52 [vl6180x](#), [stmicroelectronics](#), [time-of-flight](#), [tof](#), [i2c](#), [communication](#), [sensor](#), [arduino](#), [code](#)
- [Magnetic angle sensors](#) 2026/03/05 21:19 [magnetic angle sensor](#), [magnetic flux](#), [sensor](#), [spi](#), [i2c](#), [pwm](#), [communication](#), [modul](#), [as5047p](#), [as5600](#), [mt6701](#), [mt6816](#), [mt6835](#), [tle5012b](#), [amr](#), [gmr](#), [tmr](#), [anisotropic magnetoresistive](#)
- [SSH1106/SSD1306 OLED Display with I²C communication](#) 2026/02/14 18:27 [i2c](#), [oled](#), [display](#), [ssd1306](#), [sh1106](#), [ssh1106](#), [arduino](#), [cmos](#)

[PCA9306](#), [I2C](#), [Voltage](#), [Level](#), [converter](#)

This page has been accessed for: Today: 5, Until now: 6

From:
<https://www.lamaplc.de/> - **lamaPLC**

Permanent link:
https://www.lamaplc.de/doku.php?id=sensor:level_converter

Last update: **2026/04/21 20:47**

